

Nightmare Long

Metallica

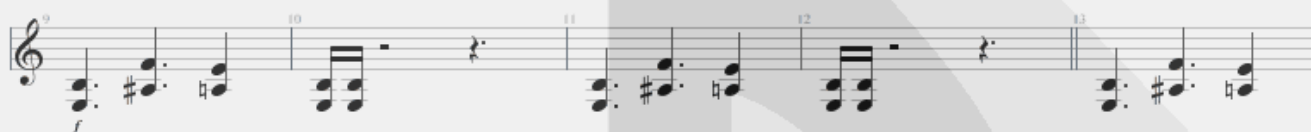
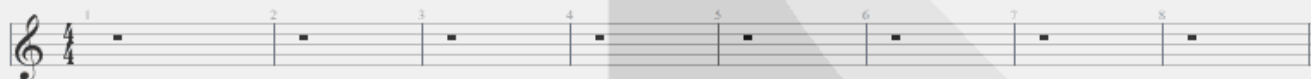
Death Magnetic

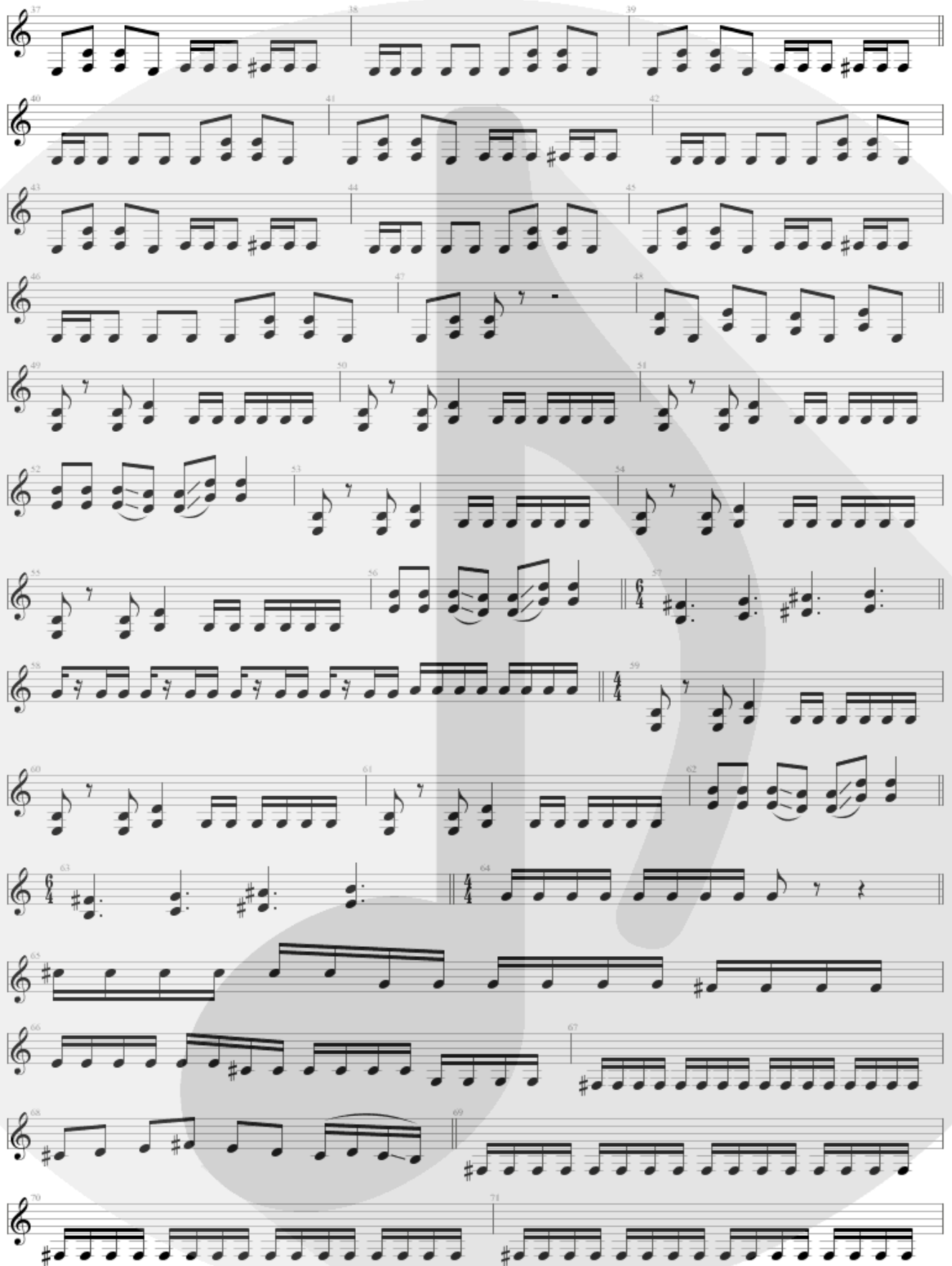
Guitarra / Electric Guitar 2

Tune down 1 step

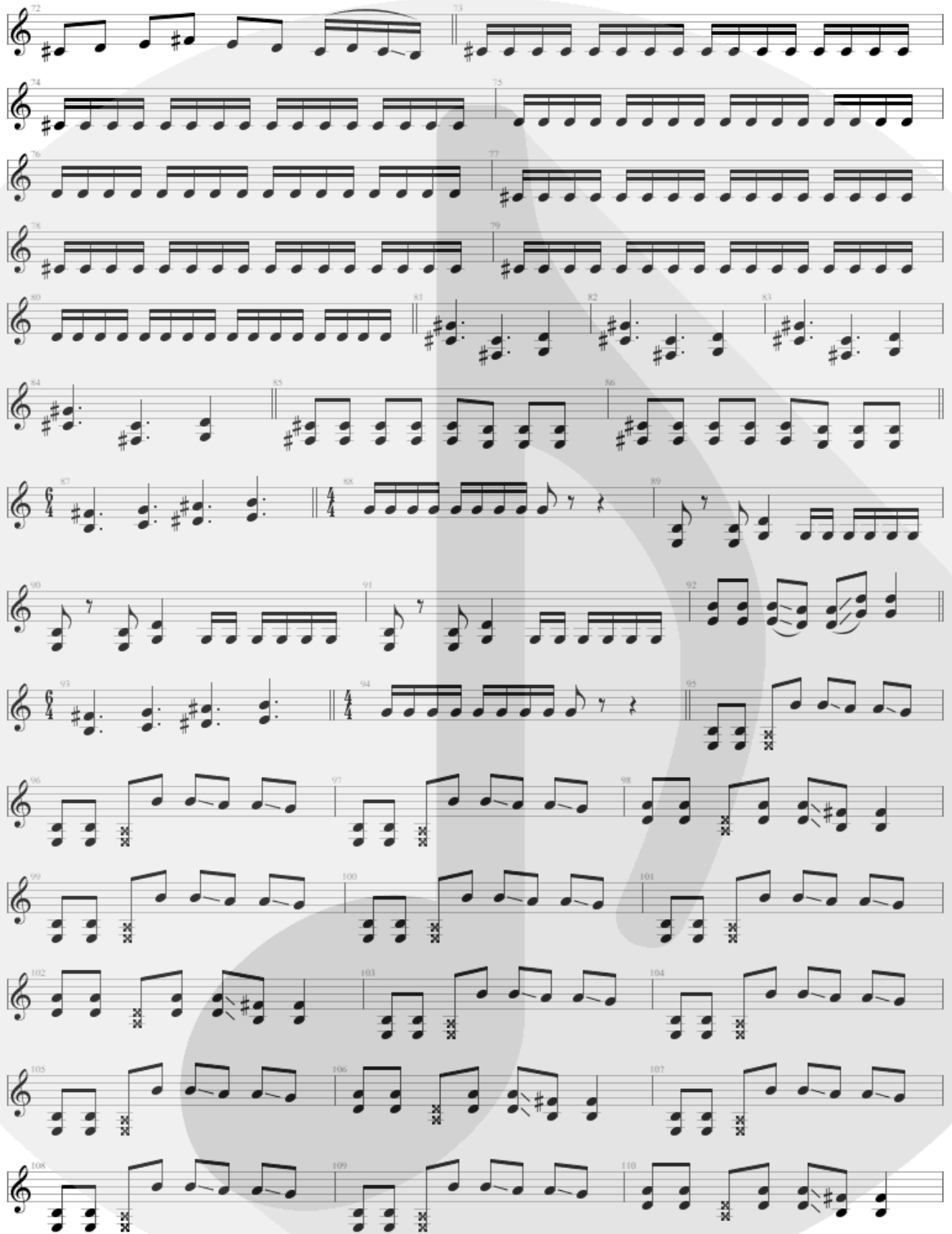
- ① = D ④ = C
- ② = A ⑤ = G
- ③ = F ⑥ = D

$\text{♩} = 120$

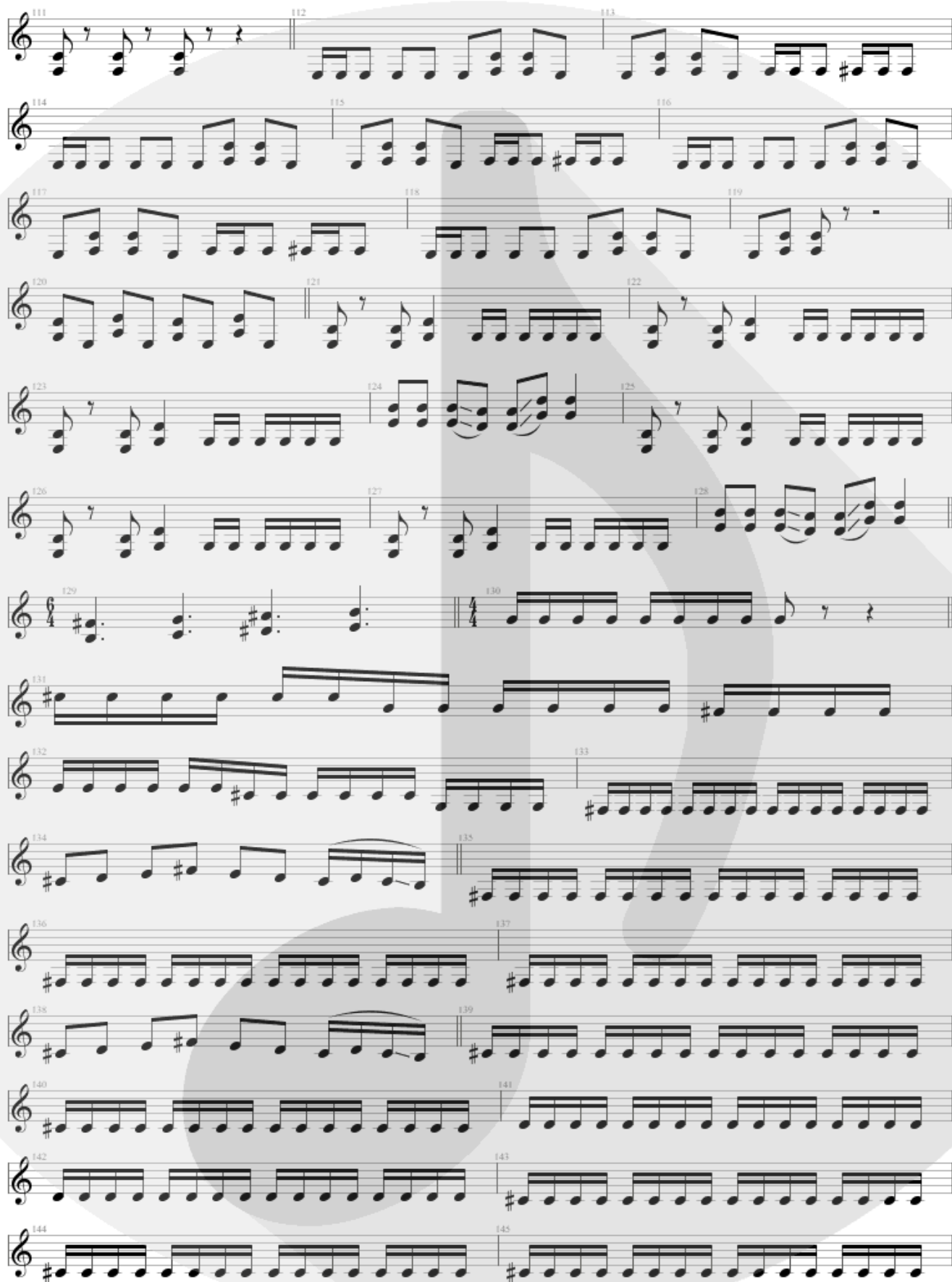




Musical score for guitar, consisting of 14 staves of music. The score begins at measure 37 and ends at measure 71. The music is written in treble clef with a key signature of one sharp (F#). The notation includes various rhythmic patterns such as eighth and sixteenth notes, chords, and rests. Measure numbers are indicated at the start of each line: 37, 40, 43, 46, 49, 52, 55, 58, 61, 64, 67, 70, and 71. The score concludes with a double bar line at the end of measure 71.



The image displays a musical score for guitar, consisting of 18 staves of music. The score is written in treble clef with a key signature of one sharp (F#). The music begins at measure 72 and ends at measure 110. The notation includes various rhythmic values such as eighth and sixteenth notes, as well as chords and rests. Measure numbers are indicated at the beginning of each staff. A large, faint watermark of a guitar is visible in the background of the page.



Musical score for guitar, consisting of 14 staves of music. The score is written in treble clef with a key signature of one sharp (F#). The music is divided into measures, with measure numbers 111 through 145 indicated at the beginning of each line. The notation includes various rhythmic values such as eighth and sixteenth notes, as well as rests and accidentals. A large, faint watermark of a guitar is visible in the background of the page.



Musical score for guitar, measures 146-171. The score is written in treble clef with a key signature of one sharp (F#). The time signature is 4/4. The music features a mix of eighth and sixteenth notes, often beamed together. Measure 147 contains a double bar line and a key signature change to two sharps (F# and C#). Measure 153 contains a double bar line and a time signature change to 3/4. Measure 164 contains a double bar line and a key signature change to one sharp (F#). The score includes various guitar-specific notations such as 'x' marks on the strings and slanted lines indicating bends or slides. The background features a large, faint watermark of a guitar.



Musical score for guitar, measures 172-195. The score is written in treble clef with a key signature of one sharp (F#). The music consists of a single melodic line. Measures 172-175 show a sequence of eighth and quarter notes. Measures 176-177 continue this sequence. Measure 178 is a whole rest. Measure 179 is a double bar line. Measures 180-181 are whole notes. Measures 182-183 are whole notes. Measures 184-185 are whole notes. Measures 186-187 are whole notes. Measures 188-191 show a sequence of eighth and quarter notes. Measures 192-193 continue this sequence. Measures 194-195 continue this sequence.