

Falling Down

Oasis

Dig Out Your Soul

Canto / Voice

Standard tuning

Moderate ♩ = 131

Intro



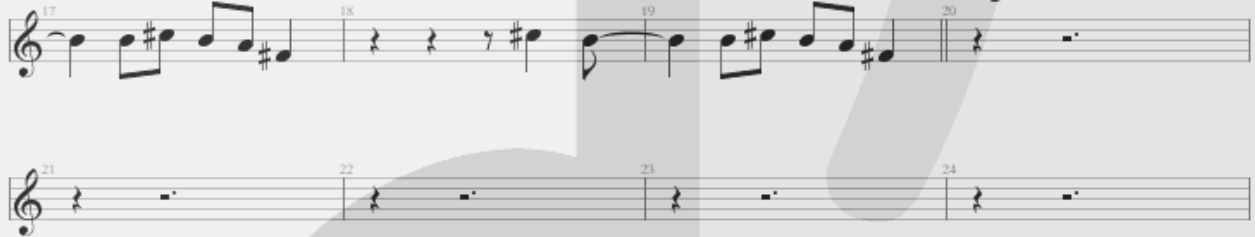
Musical notation for the Intro section, measures 1-8. The notation consists of a single treble clef staff with a 4/4 time signature. Measures 1-4 contain whole rests, and measures 5-8 also contain whole rests.

Verse 1



Musical notation for Verse 1, measures 9-16. The notation consists of a single treble clef staff with a 4/4 time signature. Measure 9 contains a whole rest. Measure 10 begins with a double bar line and a key signature change to one sharp (F#). Measures 10-16 contain a melodic line starting with a quarter note F#, followed by eighth notes G# and A, and a quarter note B. The melody continues with various rhythmic patterns and rests.

Bridge




Musical notation for the Bridge section, measures 17-24. The notation consists of a single treble clef staff with a 4/4 time signature. Measures 17-19 contain a melodic line similar to Verse 1. Measure 20 contains a whole rest. Measures 21-24 contain whole rests.

Verse 2



Musical notation for Verse 2, measures 25-32. The notation consists of a single treble clef staff with a 4/4 time signature. Measures 25-27 contain whole rests. Measure 28 begins with a double bar line and a key signature change to one sharp (F#). Measures 28-32 contain a melodic line similar to Verse 1.

Bridge



Break



Chorus 1



Bridge



ff *f* *mf*

69 *f* 70 71 *mf* 72

73 *f* 74 75 *mf f* 76 *mf*

77 *f* 78 79 *mf f* 80 *mf*

81 *f* 82 83 84 **Strings Solo**

85 86 87 88

89 90 91 92

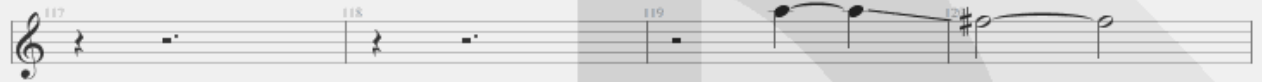
93 94 95 96

97 98 99 **Chorus 2** 100

101 102 103 104



Bridge



Final Verse



$\text{♩} = 131$ *rall.* -----



rall. ----- $\text{♩} = 120$

