

Everybody Wants To Rule The World

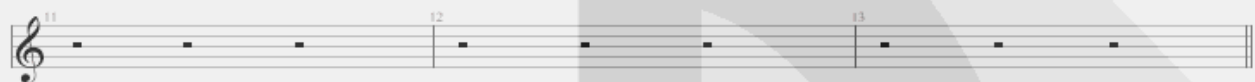
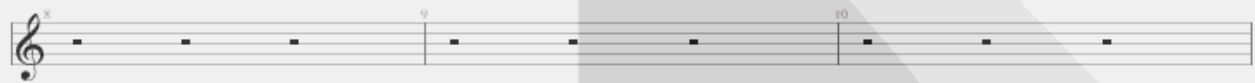
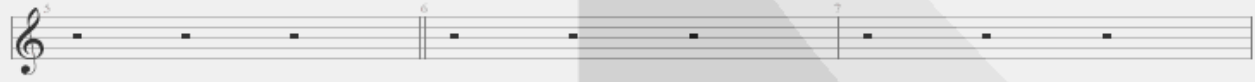
Tears For Fears
Songs From The Big Chair
Canto / Voice

Standard tuning

$\text{♩} = 170$

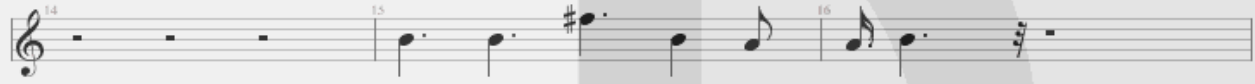


Pre-verse



Welcome to your li- -ife

Verse



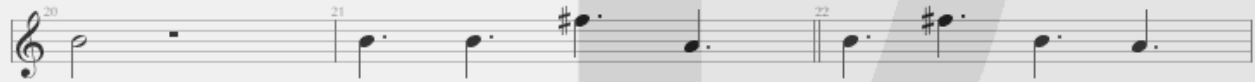
f

There's turning back Even while we're a-



sleep We will find you Acting on your

Chorus



best be- ha- vior Turn you back on mother nature



E- very- bo- dy wants to rule the world

Pre-verse 2

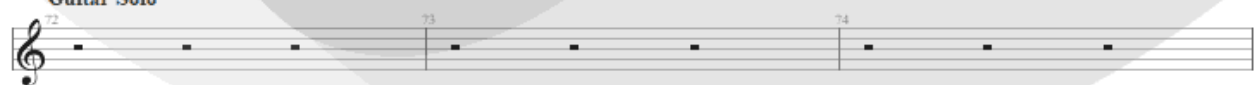
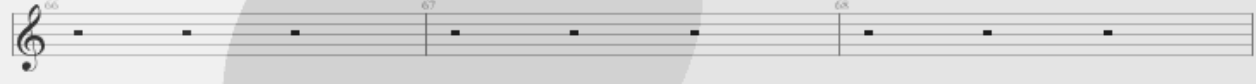
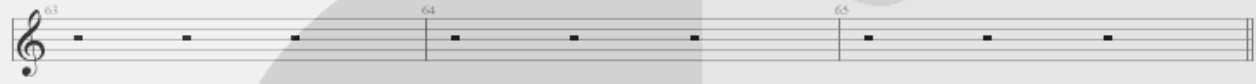
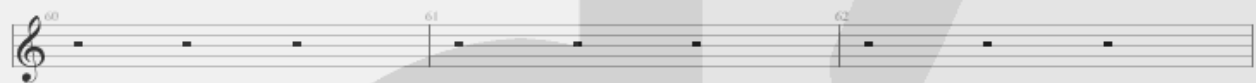
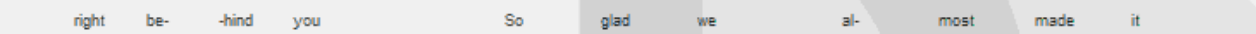
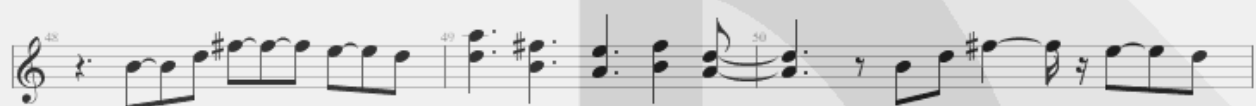
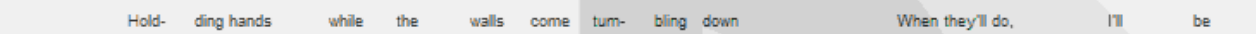
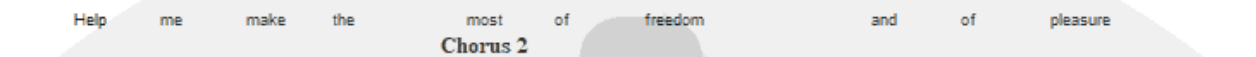
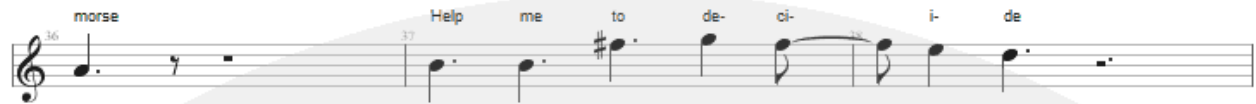


Verse 2



It's my own de- sign It's my own re-





75 76 77 78

I can't stand this in-de-ci-sion

Solo Chorus

79 80 81 82 83 84

ff

mar-ried with a lack of vi-sion E-very-bo-dy

85 86 87 88 89 90 91 92 93

wants to rule the world Say that you never-never-never-never need it

94 95 96 97 98 99 100 101 102

One headline why be-lieve it? E-very-bo-dy

91 92 93 94 95 96 97 98 99 100 101 102

wants to rule the world

O-ffer free-dom

Chorus

96 97 98 99 100 101 102

f

and no plea-sure No-thing e-ver last for e-ver

E-very-bo-dy wants to rule the world

Outro solo

103 104 105 106 107 108 109 110 111 112 113 114 115 116 117

Fade out